

# Speech Auto Attendant



**Polty's Inc.**  
Unified Communications Solutions

## ► Overview

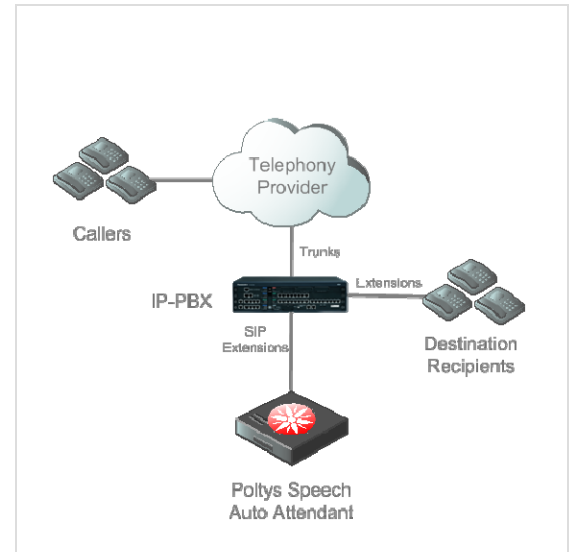
Polty's **Speech Auto Attendant (SAA)** is a turnkey solution that connects the caller to the intended extension by speaking his/ her name or by dialing the extension number.

SAA uses a set of SIP extensions from the IP-PBX in order to route the incoming calls to the destination extensions according to the caller spoken name and a predefined list of routing extensions.

SAA takes advantage of Microsoft Speech Engine in order to identify the destination recipient names.

## ► Key Features

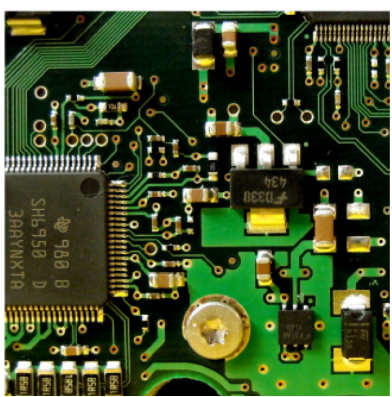
- Easy to configure and use
- High end Text to Speech and Speech Recognition engines
- SIP IVR-based with predefined auto attendant script
- 100% Voice over IP solution
- Connects to IP-PBX using SIP Extensions
- Compatible with Panasonic KX-TDE/ NCP/ NS IP-PBXs
- Configurable destination recipient name/ extension list
- High scalability
- Multiple languages supported



## Benefits

- Cost-effective software solution
- Easily navigate using speech and/or keypad
- English-French bilingual solution
- Natural language commands
- Rapid, accurate transfers the first time
- Reduce calls to operator by 70%-85%

## System Requirements



- Micro chassis with Intel Core Duo 2.13 GHz or better
- RAM 1 GB or more
- NIC 100Base-T or better
- Hard Disk 250 GB
- Microsoft Windows Server 2008, Microsoft Windows Server 2012
- Panasonic KX-TDE 100/200/600, KX-NCP 500/1000, KX-NS1000